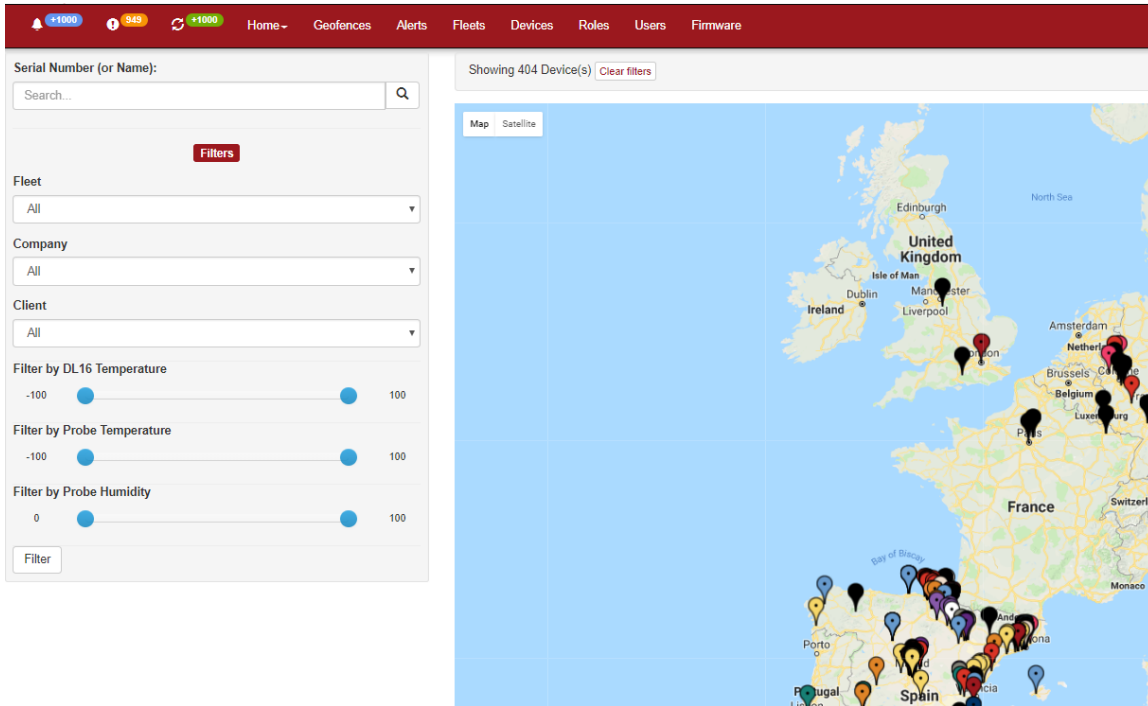


**Administrator:** Main manager that receives the account from DataLong16 with the assigned devices. The administrator has all the permissions and can create users at lower levels and has full control over the assigned devices.



The user roles and levels are also managed by the administrator.

- Permissions:**
- Geofences** (Permission to view Routes section in the Platform)
  - Alerts** (Permission to view Alerts section in the Platform)
  - Fleets** (Permission to view Fleets section in the Platform)
  - Devices** (Permission to view Devices section in the Platform)
  - Roles** (Permission to view Roles section in the Platform)
  - Users** (Permission to view Users section in the Platform)

**User:** Created by the administrator, only has the ability to view according to the assigned “Role” and will not be able to edit. The administrator will be in charge of giving more permissions to extend user attributes.

Permissions that are given to the Role:

- Permissions:**
- Geofences** (Permission to view Routes section in the Platform)
  - Alerts** (Permission to view Alerts section in the Platform)
  - Fleets** (Permission to view Fleets section in the Platform)
  - Devices** (Permission to view Devices section in the Platform)
  - Roles** (Permission to view Roles section in the Platform)
  - Users** (Permission to view Users section in the Platform)

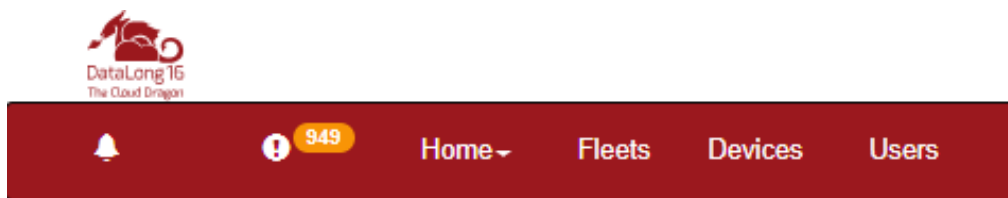
The user sees it with that Role:



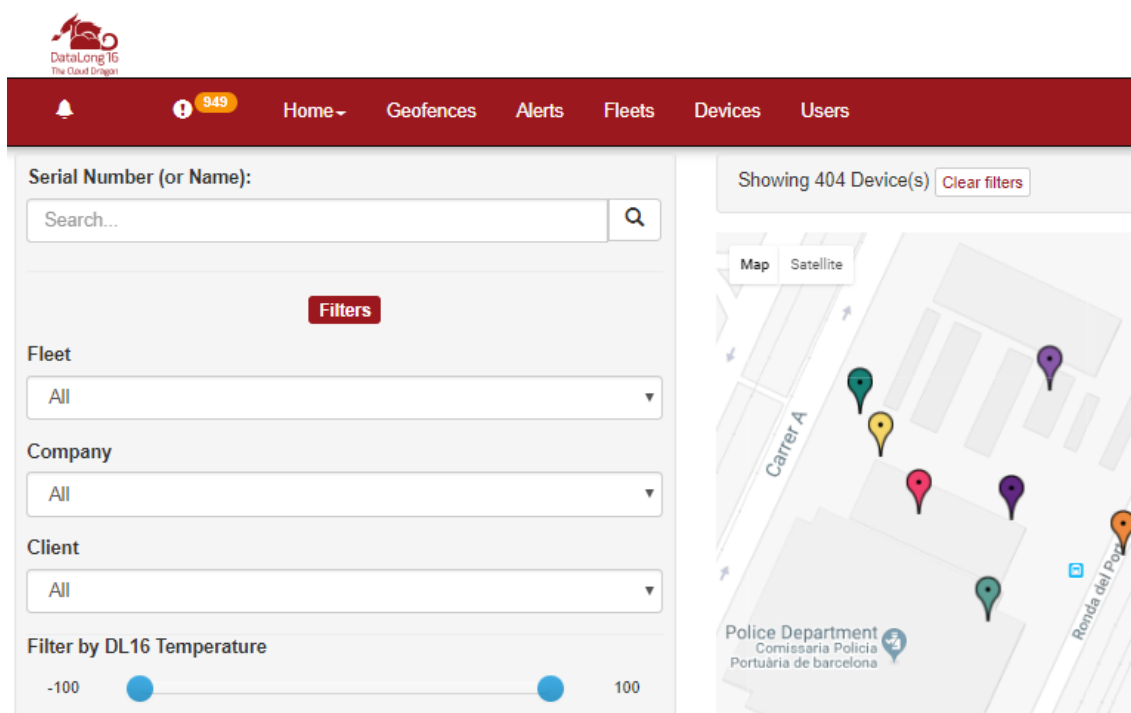
Permissions that are given to the Role:

- Permissions:**
- Geofences** (Permission to view Routes section in the Platform)
  - Alerts** (Permission to view Alerts section in the Platform)
  - Fleets** (Permission to view Fleets section in the Platform)
  - Devices** (Permission to view Devices section in the Platform)
  - Roles** (Permission to view Roles section in the Platform)
  - Users** (Permission to view Users section in the Platform)

The user sees it with that Role:



**Fleet Manager:** is created by the administrator and will have control over the devices that belong to the assigned fleet (both visualisation and creation/editing). Devices associated with the fleet can only be assigned by the administrator.



**Fleet User:** is created by the Fleet Manager and only has permission to view the devices that have been assigned. These will be displayed on the Start screen.

